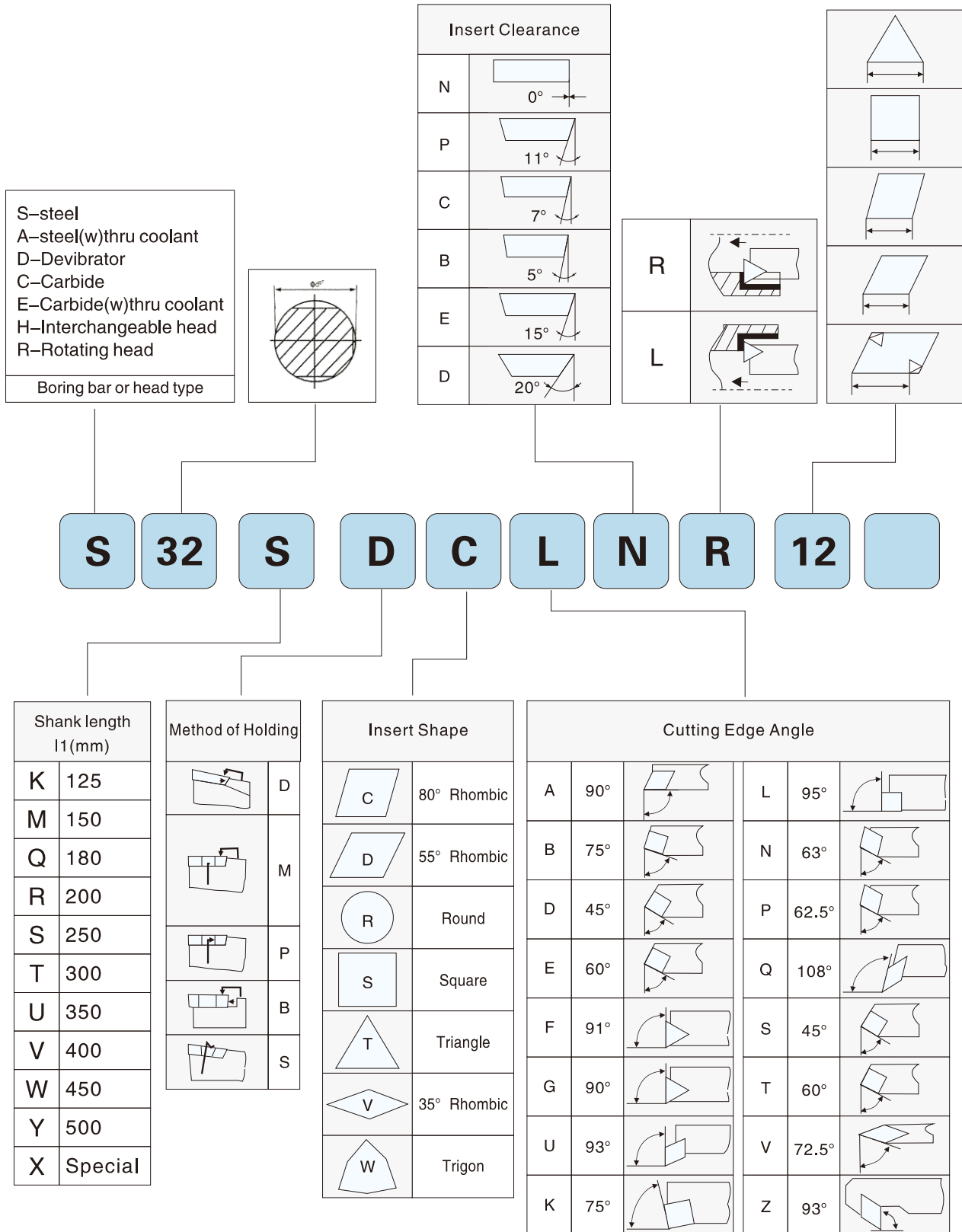


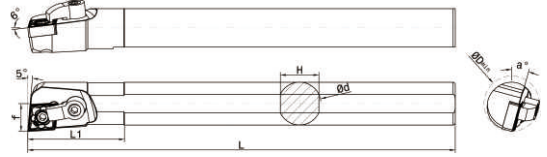
INTERNAL TURNING TOOLS

内圆车刀系列





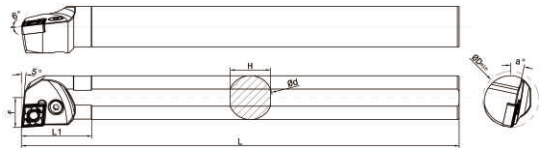
S**MCLNR/L



Ordering Code (规格型号)	Stock (库存)		Dimensions/mm (尺寸/mm)						
	R	L	D	d	L	L1	H	f	a°
S20R-MCLNR/L12	●	●	27	20	200	45	18	13	15
S25S-MCLNR/L12	●	●	32	25	250	45	23	16.5	12
S32T-MCLNR/L12	●	●	40	32	300	50	29	22.5	17
S40U-MCLNR/L12	●	●	50	40	350	55	37	26	15

Ordering Code (规格型号)	Blade (刀片)	Knife pad (刀垫)	Pin (销钉)	Spring (压板)	Screw (双头螺钉)	Wrench (扳手)
S20R-MCLNR/L12	CN**1204	※	MXD0614	MYB1811	ST0620	L3.0
S25S-MCLNR/L12		※	MXD0614	MYB1811	ST0620	
S32T-MCLNR/L12		CN-1204	MXD0617	MYB1814	ST0625	
S40U-MCLNR/L12		CN-1204	MXD0617	MYB1814	ST0625	

S**PCLNR/L

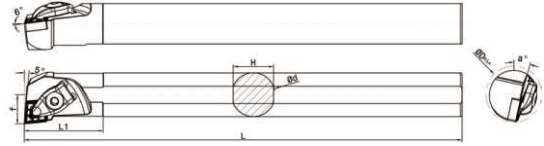
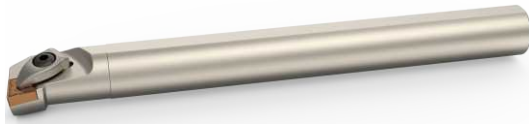


Ordering Code (规格型号)	Stock (库存)		Dimensions/mm (尺寸/mm)						
	R	L	D	d	L	L1	H	f	a°
S25S-PCLNR/L12	●	●	32	25	250	45	23	17	12
S32T-PCLNR/L12	●	●	40	32	300	50	29	22	17
S40U-PCLNR/L12	●	●	50	40	350	55	37	26	15

Ordering Code (规格型号)	Blade (刀片)	Knife pad (刀垫)	Lever (杠杆)	Pad pin (垫销)	Screw (螺钉)	Wrench (扳手)
S25S-PCLNR/L12	CN**1204	※	GGX0514A	※	NLJ0816-P	L3.0
S32T-PCLNR/L12		CN-P1203	GGX0514	DX0606	NLJ0820-P	
S40U-PCLNR/L12		CN-P1203	GGX0514	DX0606	NLJ0820-P	

● Item in stock 标准库存 ○ Order on demand 无库存

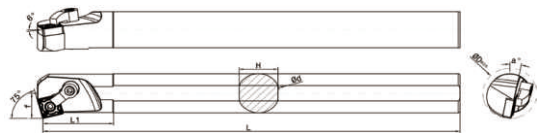
S**DCLNR/L



Ordering Code (规格型号)	Stock (库存)		Dimensions/mm (尺寸/mm)						
	R	L	D	d	L	L1	H	f	a°
S25S-DCLNR/L12	●	●	32	25	250	45	23	17	12
S32T-DCLNR/L12	●	●	40	32	300	50	29	22	17
S40U-DCLNR/L12	●	●	50	40	350	55	37	26	15

Ordering Code (规格型号)	Blade (刀片)	Knife pad (刀垫)	Pin (销钉)	Spring (压板)	Screw (螺钉)	Blade (弹簧)	Wrench (扳手)
S25S-DCLNR/L12	■	■	■	■	■	■	■
S32T-DCLNR/L12	CN**1204	※	※	DYB2413A	ZZM0616	TH0810	L4.0
S40U-DCLNR/L12		CN-1204	DXD0614				L3.0
							L4.0

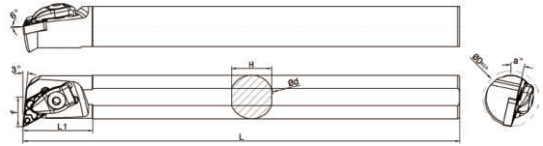
S**MSKNR/L



Ordering Code (规格型号)	Stock (库存)		Dimensions/mm (尺寸/mm)						
	R	L	D	d	L	L1	H	f	a°
S25S-MSKNR/L12	●	●	32	25	250	45	23	16.5	12
S32T-MSKNR/L12	●	●	40	32	300	50	29	22.5	17

Ordering Code (规格型号)	Blade (刀片)	Knife pad (刀垫)	Pin (销钉)	Spring (压板)	Screw (螺钉)	Wrench (扳手)
S25S-MSKNR/L12	■	■	■	■	■	■
S32T-MSKNR/L12	SN**1204	SN-1204	MXD0617	MYB1814	ST0625	L3.0

S**DDUNR/L



Ordering Code (规格型号)	Stock (库存)		Dimensions/mm (尺寸/mm)						
	R	L	D	d	L	L1	H	f	a°

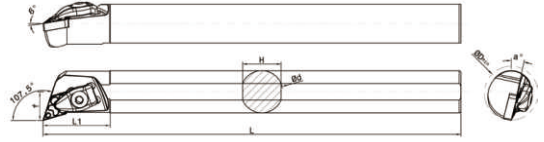
S25S-DDUNR/L1504	●	●	32	25	250	45	23	17	12
S32T-DDUNR/L1504	●	●	40	32	300	50	29	22.5	17
S40U-DDUNR/L1504	●	●	50	40	350	55	37	26	15
S32T-DDUNR/L1506	●	●	42	32	300	50	29	22.5	17
S40U-DDUNR/L1506	●	●	50	40	350	55	37	26	15

Ordering Code (规格型号)	Blade (刀片)	Knife pad (刀垫)	Pin (销钉)	Spring (压板)	Screw (螺钉)	Blade (弹簧)	Wrench (扳手)

S25S-DDUNR/L1504	DN**1504	※	※	DYB2413A	ZZM0616	TH0810	L4.0
S32T-DDUNR/L1504		DN-1504	DXD0614	DYB3113			L3.0 L4.0
S40U-DDUNR/L1504		DN-1504					
S32T-DDUNR/L1506	DN**1506	DN-1504	DXD0614	DYB3113	ZZM0616	TH0810	L3.0 L4.0
S40U-DDUNR/L1506							

● Item in stock 标准库存 ○ Order on demand 无库存

S**DDQNR/L

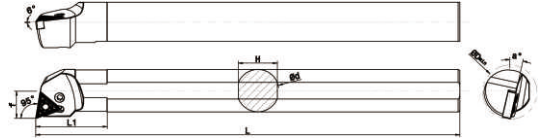


Ordering Code (规格型号)	Stock (库存)		Dimensions/mm (尺寸/mm)						
	R	L	D	d	L	L1	H	f	a°
S25S-DDQNR/L1504	●	●	32	25	250	45	23	17	12
S32T-DDQNR/L1504	●	●	40	32	300	50	29	22.5	17
S40U-DDQNR/L1504	●	●	50	40	350	55	37	26	15
S32T-DDQNR/L1506	●	●	42	32	300	50	29	22.5	17
S40U-DDQNR/L1506	●	●	50	40	350	55	37	26	15

Ordering Code (规格型号)	Blade (刀片)	Knife pad (刀垫)	Pin (销钉)	Spring (压板)	Screw (螺钉)	Wrench (扳手)
S25S-DDQNR/L1504	DN**1504	※	※	DYB2413A	ZZM0616	L4.0
S32T-DDQNR/L1504		DN-1504	DXD0614	DYB3113		L3.0 L4.0
S40U-DDQNR/L1504						
S32T-DDQNR/L1506	DN**1506	DN-1504				
S40U-DDQNR/L1506						

内圆
INTERNAL TURNING TOOLS

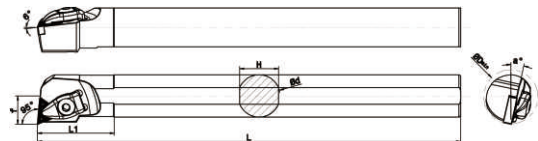
S**PTUNR/L



Ordering Code (规格型号)	Stock (库存)		Dimensions/mm (尺寸/mm)						
	R	L	D	d	L	L1	H	f	a°
S20R-PTUNR/L16	●	●	25	20	200	33	18	13	15
S25S-PTUNR/L16	●	●	32	25	250	42	23	17	12
S32T-PTUNR/L16	●	●	44	32	300	50	29	22	17

Ordering Code (规格型号)	Blade (刀片)	Knife pad (刀垫)	Lever (杠杆)	Pad pin (垫销)	Screw (螺钉)	Wrench (扳手)
S20R-PTUNR/L16	TN**1604	※	GGX0310A	※	NLJ0615-P	L3.0
S25S-PTUNR/L16		TN-P1602	GGX0310	DX0505	NLJ0618-P	
S32T-PTUNR/L16						

S**DTUNR/L

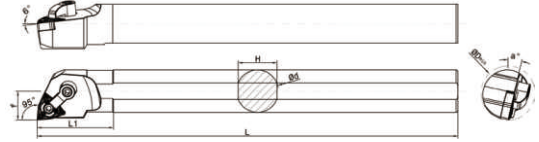


Ordering Code (规格型号)	Stock (库存)		Dimensions/mm (尺寸/mm)						
	R	L	D	d	L	L1	H	f	a°
S20R-DTUNR/L16	●	●	28	20	200	33	18	14	15
S25S-DTUNR/L16	●	●	32	25	250	42	23	15.5	13
S32T-DTUNR/L16	●	●	42	32	300	50	29	19.5	13

Ordering Code (规格型号)	Blade (刀片)	Knife pad (刀垫)	Pin (销钉)	Spring (压板)	Screw (螺钉)	Blade (弹簧)	Wrench (扳手)
S20R-DTUNR/L16	TN**1604	※	※	DYB2413B	ZZM0616	TH0810	L4.0 L2.5
S25S-DTUNR/L16		TN-1603	DXD0512				
S32T-DTUNR/L16							

● Item in stock 标准库存 ○ Order on demand 无库存

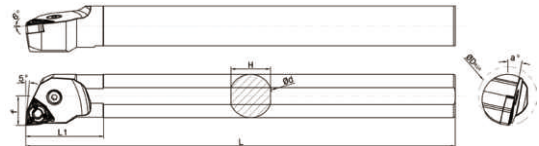
S**MWLNR/L



Ordering Code (规格型号)	Stock (库存)		Dimensions/mm (尺寸/mm)						
	R	L	D	d	L	L1	H	f	a°
S20R-MWLNR/L08	●	●	25	20	200	45	18	13	15
S25S-MWLNR/L08	●	●	32	25	250	45	23	15	13
S32T-MWLNR/L08	●	●	40	32	300	50	29	20	13

Ordering Code (规格型号)	Blade (刀片)	Knife pad (刀垫)	Pin (销钉)	Spring (压板)	Screw (螺钉)	Wrench (扳手)
S20R-MWLNR/L08	WN**0804	※	MXD0614	MYB1811	ST0620	L3.0
S25S-MWLNR/L08				MYB1814	ST0625	
S32T-MWLNR/L08		WN-0804	MXD0617			

S**PWLNR/L



Ordering Code (规格型号)	Stock (库存)		Dimensions/mm (尺寸/mm)						
	R	L	D	d	L	L1	H	f	a°
S25S-PWLNR/L08	●	●	32	25	250	45	23	17	12
S32T-PWLNR/L08	●	●	40	32	300	50	29	20	10
S40U-PWLNR/L08	●	●	50	40	350	55	37	25	10

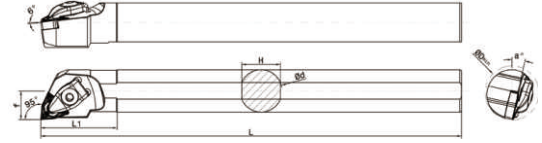
Ordering Code (规格型号)	Blade (刀片)	Knife pad (刀垫)	Lever (杠杆)	Pad pin (垫销)	Screw (螺钉)	Wrench (扳手)
S25S-PWLNR/L08	WN**0804	※	GGX0514A	※	NLJ0816-P	L3.0
S32T-PWLNR/L08				DX0606	NLJ0820-P	
S40U-PWLNR/L08		WN-P0803	GGX0514			

B07

● Item in stock 标准库存 ○ Order on demand 无库存

内圆
INTERNAL TURNING TOOLS

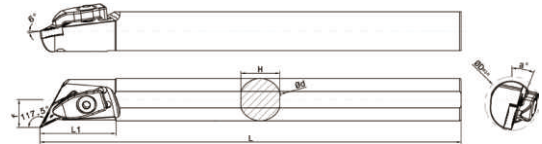
S**DWLNR/L



Ordering Code (规格型号)	Stock (库存)		Dimensions/mm (尺寸/mm)							
	R	L	D	d	L	L1	H	f	a°	
S20R-DWLNR/L08	●	●	25	20	200	45	18	13	15	
S25S-DWLNR/L08	●	●	32	25	250	45	23	16.5	12	
S32T-DWLNR/L08	●	●	42	32	300	50	29	22.5	17	

Ordering Code (规格型号)	Blade (刀片)	Knife pad (刀垫)	Pin (销钉)	Spring (压板)	Screw (螺钉)	Blade (弹簧)	Wrench (扳手)
S20R-DWLNR/L08	WN**0804	※	※	DYB2413A	ZZM0616	TH0810	L4.0
S25S-DWLNR/L08		WN-0804	DXD0614				
S32T-DWLNR/L08							

S**DVXNR/L

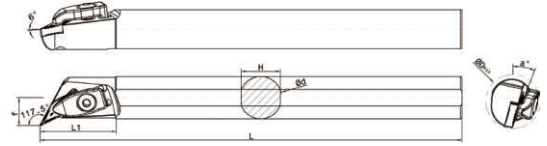


Ordering Code (规格型号)	Stock (库存)		Dimensions/mm (尺寸/mm)							
	R	L	D	d	L	L1	H	f	a°	
S20R-DVXNR/L16	●	●	33	20	200	45	18	13	15	
S25S-DVXNR/L16	●	●	35	25	250	45	23	16.5	12	
S32T-DVXNR/L16	●	●	42	32	300	50	29	22.5	17	

Ordering Code (规格型号)	Blade (刀片)	Knife pad (刀垫)	Pin (销钉)	Spring (压板)	Screw (螺钉)	Blade (弹簧)	Wrench (扳手)
S20R-DVXNR/L16	VN**1604	※	※	DYB3113	ZZM0616	TH0810	L4.0
S25S-DVXNR/L16		VN-1603	DXD0512				
S32T-DVXNR/L16							

● Item in stock 标准库存 ○ Order on demand 无库存

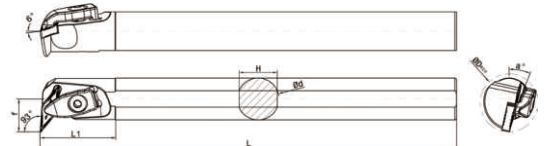
S**DVQNR/L



Ordering Code (规格型号)	Stock (库存)		Dimensions/mm (尺寸/mm)						
	R	L	D	d	L	L1	H	f	a°
S25S-DVQNR/L16	●	●	34	25	250	45	23	17	12
S32T-DVQNR/L16	●	●	42	32	300	50	29	23	17
S40U-DVQNR/L16	●	●	50	40	350	55	37	27	15

Ordering Code (规格型号)	Blade (刀片)	Knife pad (刀垫)	Pin (销钉)	Spring (压板)	Screw (螺钉)	Wrench (扳手)
S25S-DVQNR/L16	VN**1604	※	※	DYB3113	ZZM0616	L4.0
S32T-DVQNR/L16		※	※			L2.5
S40U-DVQNR/L16		VN-1603	DXD0512			L4.0

S**DVUNR/L



Ordering Code (规格型号)	Stock (库存)		Dimensions/mm (尺寸/mm)						
	R	L	D	d	L	L1	H	f	a°
S25S-DVUNR/L16	●	●	35	25	250	45	23	17	12
S32T-DVUNR/L16	●	●	42	32	300	50	29	23	17
S40U-DVUNR/L16	●	●	50	40	350	55	37	27	15

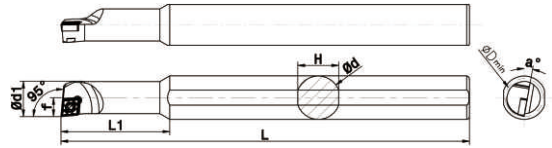
Ordering Code (规格型号)	Blade (刀片)	Knife pad (刀垫)	Pin (销钉)	Spring (压板)	Screw (螺钉)	Blade (弹簧)	Wrench (扳手)
S25S-DVUNR/L16	VN**1604	※	※	DYB3113	ZZM0616	TH0810	L4.0
S32T-DVUNR/L16		※	※			TH0810	L2.5
S40U-DVUNR/L16		VN-1603	DXD0512			TH0810	L4.0

B09

● Item in stock 标准库存 ○ Order on demand 无库存

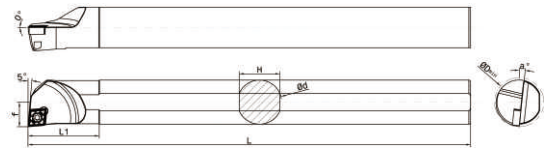
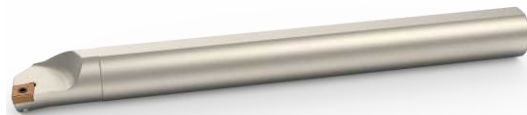
 内圆
INTERNAL TURNING TOOLS

S**SCLCR/L



Ordering Code (规格型号)	Stock (库存)		Dimensions/mm (尺寸/mm)								Blade (刀片)	Screw (螺钉)	Wrench (扳手)
	R	L	D	d	d1	f	L1	L	H	a°			
S0612K-SCLCR/L04	●	●	7	12	6	3.5	18	125	11.3	10	CC**0401	MT2.0*4	FT-6
S0812K-SCLCR/L06	●	●	10	12	8	5	24	125	11.3	10	CC**0602	MT2.5*5	FT-8
S0616M-SCLCR/L04	●	●	7	16	6	3.5	18	150	11.3	10	CC**0401	MT2.0*4	FT-6
S0816M-SCLCR/L06	●	●	10	16	8	5	24	150	15.3	10	CC**0602	MT2.5*5	FT-8
S1016M-SCLCR/L06	●	●	13	16	10	6	30	150	15.3	10			
S1216M-SCLCR/L06	●	●	16	16	12	7	36	150	15.3	10			

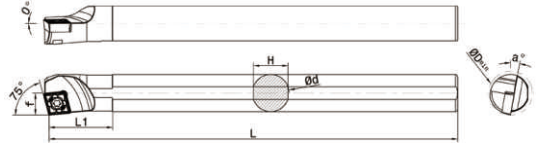
S**SCLCR/L



Ordering Code (规格型号)	Stock (库存)		Dimensions/mm (尺寸/mm)								Blade (刀片)	Screw (螺钉)	Wrench (扳手)
	R	L	D	d	f	L	L1	H	a°				
S07K-SCLCR/L06	●	●	9	7	4	125	20	6.3	15	CC**0602	MT2.5*5	FT-8	
S08K-SCLCR/L06	●	●	10	8	5	125	20	7.3	13				
S10K-SCLCR/L06	●	●	13	10	6	125	22	9.3	12				
S12M-SCLCR/L06	●	●	16	12	7	150	25	11.3	10				
S16Q-SCLCR/L09	●	●	20	16	9.5	180	30	15.3	10	CC**09T3	MT3.5*8	FT-15	
S20R-SCLCR/L09	●	●	25	20	11.5	200	35	18	8				
S25R-SCLCR/L09	●	●	31	25	14	200	40	23	6				
S25S-SCLCR/L09	●	●	31	25	14	250	40	23	6				
S25S-SCLCR/L12	●	●	31	25	14.5	250	40	23	6				CC**1204

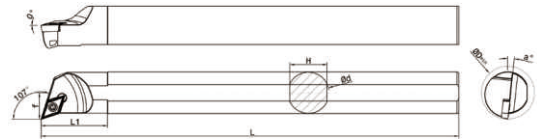
● Item in stock 标准库存 ○ Order on demand 无库存

S**SCKCR/L



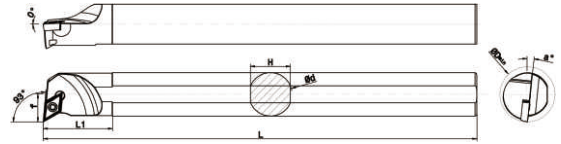
Ordering Code (规格型号)	Stock (库存)		Dimensions/mm (尺寸/mm)							Blade (刀片)	Screw (螺钉)	Wrench (扳手)
	R	L	D	d	f	L	L1	H	a°			
S08K-SCKCR/L06	●	●	10	8	5.5	125	20	7.3	13	CC**0602	MT2.5*6	FT-8
S10K-SCKCR/L06	●	●	13	10	6	125	22	9.3	12			
S12M-SCKCR/L06	●	●	16	12	7	150	25	11.3	10			
S16Q-SCKCR/L09	●	●	20	16	9.5	180	30	15.3	8	CC**09T3	MT3.5*8	FT-15
S20R-SCKCR/L09	●	●	25	20	11.5	200	35	18	6			

S**SDQCR/L



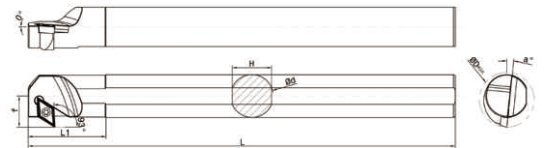
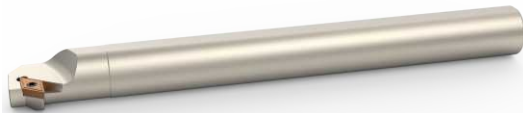
Ordering Code (规格型号)	Stock (库存)		Dimensions/mm (尺寸/mm)							Blade (刀片)	Screw (螺钉)	Wrench (扳手)
	R	L	D	d	f	L	L1	H	a°			
S08K-SDQCR/L07	●	●	13	8	6	125	20	7.3	13	DC**0702	MT2.5*6	FT-8
S10K-SDQCR/L07	●	●	16	10	6.5	125	23	9.3	12			
S12M-SDQCR/L07	●	●	20	12	8	150	30	11.3	10			
S16Q-SDQCR/L11	●	●	25	16	10.5	180	30	15.3	10	DC**11T3	MT3.5*8	FT-15
S20R-SDQCR/L11	●	●	28	20	13	200	39	18	8			
S25S-SDQCR/L11	●	●	33	25	15.5	250	40	23	6			
S32T-SDQCR/L11	●	●	41	32	19.5	300	43	29	4			

S**SDUCR/L



Ordering Code (规格型号)	Stock (库存)		Dimensions/mm (尺寸/mm)							Blade (刀片)	Screw (螺钉)	Wrench (扳手)
	R	L	D	d	f	L	L1	H	a°			
S08K-SDUCR/L07	●	●	13	8	6	125	20	7.3	13	DC**0702	MT2.5*6	FT-8
S10K-SDUCR/L07	●	●	15	10	7	125	23	9.3	12			
S12M-SDUCR/L07	●	●	17	12	8.5	150	30	11.3	10			
S16Q-SDUCR/L11	●	●	22	16	11	180	30	15.3	10	DC**11T3	MT3.5*8	FT-15
S20R-SDUCR/L11	●	●	25	20	13	200	39	18	8			
S25S-SDUCR/L11	●	●	32	25	16	250	40	23	6			
S32T-SDUCR/L11	●	●	40	32	20	300	43	29	4			

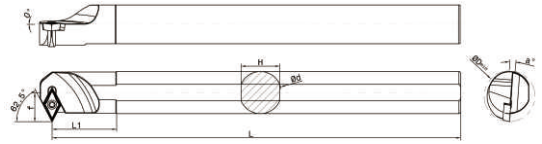
S**SDZCR/L



Ordering Code (规格型号)	Stock (库存)		Dimensions/mm (尺寸/mm)							Blade (刀片)	Screw (螺钉)	Wrench (扳手)
	R	L	D	d	f	L	L1	H	a°			
S10K-SDZCR/L07	●	●	16	10	8.5	125	12	9.3	13	DC**0702	MT2.5*6	FT-8
S12M-SDZCR/L07	●	●	18	12	10.5	150	12	11.3	10			
S16Q-SDZCR/L07	●	●	22	16	12.5	180	12	15.3	7			
S16Q-SDZCR/L11	●	●	24	16	12	180	18	15.3	10	DC**11T3	MT3.5*8	FT-15
S20R-SDZCR/L11	●	●	28	20	15.5	200	18	18	7			
S25S-SDZCR/L11	●	●	34	25	18	250	18	23	5			
S32T-SDZCR/L11	●	●	38	32	21.5	300	18	29	5			

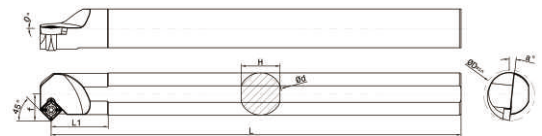
● Item in stock 标准库存 ○ Order on demand 无库存

S**SDWCR/L



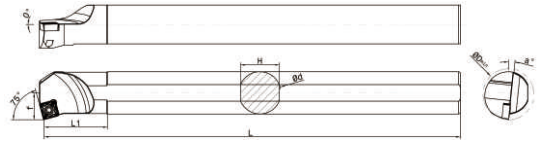
Ordering Code (规格型号)	库存 Stock		(尺寸/mm) Dimensions/mm							刀片 Blade	螺钉 Screw	扳手 Wrench
	R	L	D	d	f	L	L1	H	a°			
S12M-SDWCR/L07	●	●	19	12	9	150	25	11.3	7	DC**0702	MT2.5*6	FT-8
S16Q-SDWCR/L07	●	●	23	16	11	180	30	15.3	7			
S20R-SDWCR/L11	●	●	25	20	15	200	35	18	7	DC**11T3	MT3.5*8	FT-15
S25S-SDWCR/L11	●	●	32	25	17	250	35	23	5			
S32T-SDWCR/L11	●	●	40	32	20.5	300	40	29	5			

S**SSSCR/L



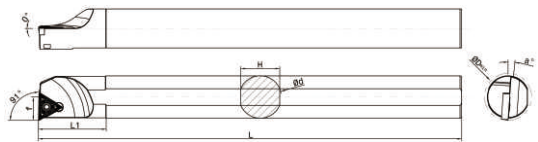
Ordering Code (规格型号)	库存 Stock		(尺寸/mm) Dimensions/mm							刀片 Blade	螺钉 Screw	扳手 Wrench
	R	L	D	d	f	L	L1	H	a°			
S12M-SSSCR/L09	●	●	16	12	8.5	150	30	11.3	12	SC**09T3	MT3.5*8	FT-15
S16Q-SSSCR/L09	●	●	22	16	11.5	180	35	15.3	10			
S20R-SSSCR/L09	●	●	26	20	13.5	200	40	18	8			
S25S-SSSCR/L09	●	●	31	25	16	250	40	23	6			

S**SSKCR/L



Ordering Code (规格型号)	库存 Stock		(尺寸/mm) Dimensions/mm							刀片 Blade	螺钉 Screw	扳手 Wrench
	R	L	D	d	f	L	L1	H	a°			
S12M-SSKCR/L09	●	●	16	12	8.5	150	30	11.3	12	SC**09T3	MT3.5*8	FT-15
S16Q-SSKCR/L09	●	●	22	16	11.5	180	35	15.3	10			
S20R-SSKCR/L09	●	●	26	20	13.5	200	40	18	8			
S25S-SSKCR/L09	●	●	31	25	16	250	40	23	6			

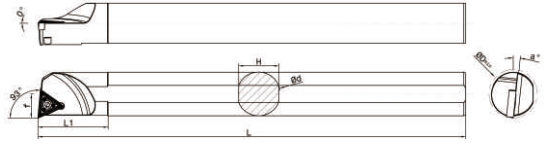
S**STFCR/L



Ordering Code (规格型号)	库存 Stock		(尺寸/mm) Dimensions/mm							刀片 Blade	螺钉 Screw	扳手 Wrench
	R	L	D	d	f	L	L1	H	a°			
S10K-STFCR/L09	●	●	13	10	6	125	24	9.3	13	TC**0902	MT2.2*6	FT-6
S12M-STFCR/L09	●	●	16	12	7	150	27	11.3	10			
S10K-STFCR/L11	●	●	13	10	6	125	24	9.3	13	TC**1102	MT2.5*6	FT-8
S12M-STFCR/L11	●	●	16	12	8	150	27	11.3	10			
S16Q-STFCR/L11	●	●	20	16	10	180	30	15.3	8			
S20R-STFCR/L11	●	●	25	10	13	200	35	18	6	TC**16T3	MT3.5*8	FT-15
S20R-STFCR/L16	●	●	25	20	13	200	40	18	8			
S25S-STFCR/L16	●	●	32	25	15	250	40	23	4	TC**16T3	MT3.5*8	FT-15
S32T-STFCR/L16	●	●	40	32	20	300	45	29	4			

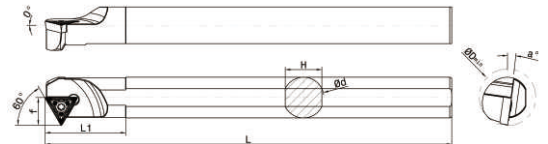
● Item in stock 标准库存 ○ Order on demand 无库存

S**STUCR/L



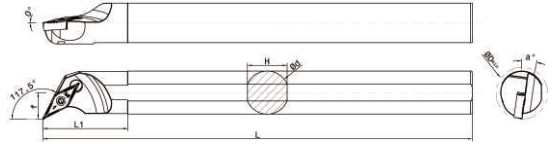
Ordering Code (规格型号)	库存 Stock		(尺寸/mm) Dimensions/mm							刀片 Blade	螺钉 Screw	扳手 Wrench
	R	L	D	d	f	L	L1	H	a°			
S06H-STUCR/L06	●	●	7	6	3.5	100	15	5.3	15	TB**0601	MT1.8*3	FT-6
S08K-STUCR/L09	●	●	10	8	5.5	125	23	7.3	15			
S10K-STUCR/L09	●	●	13	10	6	125	24	9.3	13	TC**0902	MT2.2*5	FT-6
S12M-STUCR/L09	●	●	16	12	8	150	27	11.3	10			
S10K-STUCR/L11	●	●	13	10	6	125	24	9.3	13	TC**1102	MT2.5*6	FT-8
S12M-STUCR/L11	●	●	16	12	8	150	27	11.3	10			
S16Q-STUCR/L11	●	●	20	16	10	180	30	15.3	8	TC**16T3	MT3.5*8	FT-15
S20R-STUCR/L11	●	●	25	20	13	200	35	18	6			
S20R-STUCR/L16	●	●	25	20	13	200	40	18	8	TC**16T3	MT3.5*8	FT-15
S25S-STUCR/L16	●	●	32	25	15	250	40	23	4			
S32T-STUCR/L16	●	●	40	32	20	300	45	29	4			

S**STWCR/L



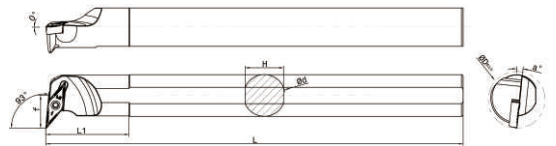
Ordering Code (规格型号)	库存 Stock		(尺寸/mm) Dimensions/mm							刀片 Blade	螺钉 Screw	扳手 Wrench
	R	L	D	d	f	L	L1	H	a°			
S08K-STWCR/L09	●	●	11	8	6	125	23	7.3	15	TC**0902	MT2.2*6	FT-6
S10K-STWCR/L09	●	●	13	10	7.5	150	24	9.3	15			
S10K-STWCR/L11	●	●	14	10	7.5	125	24	9.3	15	TC**1102	MT2.5*6	FT-8
S12M-STWCR/L11	●	●	16	12	8.5	150	27	11.3	13			
S14N-STWCR/L11	●	●	18	14	9.5	160	30	13.3	11	TC**16T3	MT3.5*8	FT-15
S16Q-STWCR/L11	●	●	20	16	10.5	180	30	15.3	10			
S20R-STWCR/L16	●	●	26	20	14.5	200	40	18	8	TC**16T3	MT3.5*8	FT-15
S25S-STWCR/L16	●	●	30	25	17	250	40	23	6			

S**SVQB(C)R/L



Ordering Code (规格型号)	库存 Stock		(尺寸/mm) Dimensions/mm							刀片 Blade	螺钉 Screw	扳手 Wrench
	R	L	D	d	f	L	L1	H	a°			
S16Q-SVQBR/L11	●	●	22	16	11	180	35	15.3	12	VB**1103	MT2.5*6	FT-8
S20R-SVQBR/L16	●	●	27	20	13.5	200	40	18	12			
S25S-SVQBR/L16	●	●	32	25	16	250	45	23	8			
S32T-SVQBR/L16	●	●	40	32	20	300	48	29	8			
S16Q-SVQCR/L11	●	●	22	16	11	180	35	15.3	8	VC**1103	MT2.5*6	FT-8
S20R-SVQCR/L16	●	●	27	20	13.5	200	40	18	8			
S25S-SVQCR/L16	●	●	32	25	16	250	45	23	6			
S32T-SVQCR/L16	●	●	40	32	20	300	48	29	8			

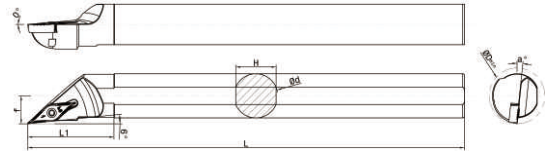
S**SVUB(C)R/L



Ordering Code (规格型号)	库存 Stock		(尺寸/mm) Dimensions/mm							刀片 Blade	螺钉 Screw	扳手 Wrench
	R	L	D	d	f	L	L1	H	a°			
S16Q-SVUBR/L11	●	●	22	16	13	180	35	15.3	12	VB**1103	MT2.5*6	FT-8
S20R-SVUBR/L16	●	●	27	20	19.5	200	40	18	12			
S25S-SVUBR/L16	●	●	32	25	18	250	45	23	12			
S32T-SVUBR/L16	●	●	40	32	22	300	48	29	8			
S16Q-SVUCR/L11	●	●	22	16	13	180	35	15.3	8	VC**1103	MT2.5*6	FT-8
S20R-SVUCR/L16	●	●	27	20	19.5	200	40	18	8			
S25S-SVUCR/L16	●	●	32	25	18	250	45	23	6			
S32T-SVUCR/L16	●	●	40	32	22	300	48	29	8			

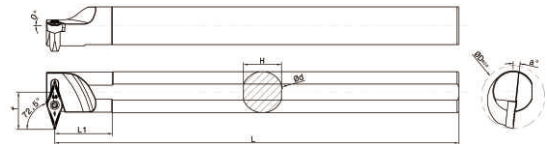
● Item in stock 标准库存 ○ Order on demand 无库存

S**SVJB(C)R/L



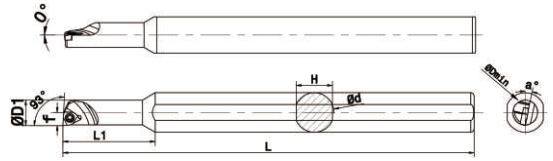
Ordering Code (规格型号)	库存 Stock		(尺寸/mm) Dimensions/mm							刀片 Blade	螺钉 Screw	扳手 Wrench
	R	L	D	d	f	L	L1	H	a°			
S16Q-SVJBR/L11	●	●	22	16	9.5	35	38	15.3	12	VB**1103	MT2.5*6	FT-8
S20R-SVJBR/L16	●	●	27	20	11.5	200	42	18	12			
S25S-SVJBR/L16	●	●	32	25	14	250	45	23	8			
S32T-SVJBR/L16	●	●	41	32	17.5	300	48	29	8			
S16Q-SVJCR/L11	●	●	22	16	9.5	35	38	15.3	8	VC**1103	MT2.5*6	FT-8
S20R-SVJCR/L16	●	●	27	20	11.5	200	42	18	8			
S25S-SVJCR/L16	●	●	32	25	14	250	45	23	6			
S32T-SVJCR/L16	●	●	41	32	17.5	300	48	29	8			

S**SVWB(C)R/L



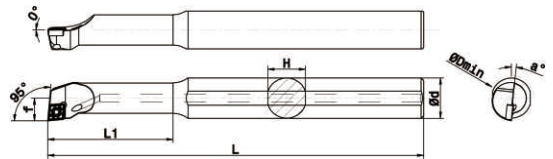
Ordering Code (规格型号)	库存 Stock		(尺寸/mm) Dimensions/mm							刀片 Blade	螺钉 Screw	扳手 Wrench
	R	L	D	d	f	L	L1	H	a°			
S16Q-SVWBR/L11	●	●	25	16	13	180	35	15.3	6	VB**1103	MT2.5*6	FT-8
S20R-SVWBR/L11	●	●	32	20	16	200	38	18	5			
S25S-SVWBR/L16	●	●	34	25	20.5	250	45	23	5			
S32T-SVWBR/L16	●	●	42	32	25.5	300	50	29	5			
S16Q-SVWCR/L11	●	●	25	16	13	180	35	15.3	6	VC**1103	MT2.5*6	FT-8
S20R-SVWCR/L11	●	●	32	20	16	200	38	18	5			
S25S-SVWCR/L16	●	●	34	25	20.5	250	45	23	5			
S32T-SVWCR/L16	●	●	42	32	25.5	300	50	29	5			

S**SWUBR/L



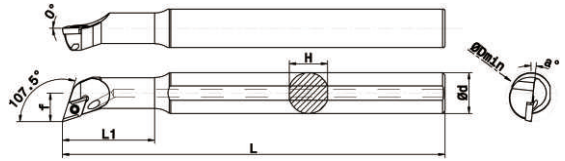
Ordering Code (规格型号)	库存 Stock		(尺寸/mm) Dimensions/mm								刀片 Blade	螺钉 Screw	扳手 Wrench
	R	L	D	D1	d	f	L	L1	H	a°			
S1005K-SWUBR/L06	●	●	6	5	10	3	125	15	9.3	12	VB**0601	MT2*3	FT-6
S1006K-SWUBR/L06	●	●	7	6	10	3.5	125	18	9.3	12			
S1007K-SWUBR/L06	●	●	8	7	10	4	125	20	9.3	12			
S1205K-SWUBR/L06	●	●	6	5	12	3	125	15	11	12			
S1605K-SWUBR/L06	●	●	6	5	16	3	125	15	15	12			

A**SCLCR/L



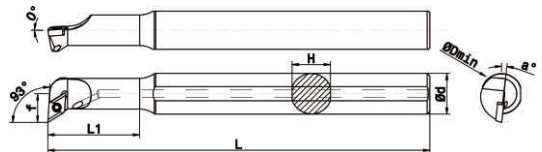
Ordering Code (规格型号)	库存 Stock		(尺寸/mm) Dimensions/mm							刀片 Blade	螺钉 Screw	扳手 Wrench
	R	L	D	d	f	L	L1	H	a°			
A0608H-SCLCR/L06	●	●	8	8	4.2	100	25	7	14	CC**0602	MT2.5*5	FT-8
A0810J-SCLCR/L06	●	●	11	10	6	110	32	9	7			
A1012K-SCLCR/L06	●	●	12.5	12	7	125	38	11	6			
A1216M-SCLCR/L06	●	●	16	16	9	150	50	15	6		MT2.5*7	

A**SDQCR/L



Ordering Code (规格型号)	库存 Stock		(尺寸/mm) Dimensions/mm							刀片 Blade	螺钉 Screw	扳手 Wrench
	R	L	D	d	f	L	L1	H	a°			
A0810H-SDQCR/L07	●	●	11.5	10	7	100	22	9	6	DC**0702	MT2.5*6	FT-6
A1012K-SDQCR/L07	●	●	15	12	9	125	28	11	6			
A1216M-SDQCR/L07	●	●	17.5	16	11	150	36	15	6		MT2.5*7	

A**SDUCR/L



Ordering Code (规格型号)	库存 Stock		(尺寸/mm) Dimensions/mm							刀片 Blade	螺钉 Screw	扳手 Wrench
	R	L	D	d	f	L	L1	H	a°			
A0810H-SDUCR/L07	●	●	11.5	10	7	100	22	9	7	DC**0702	MT2.5*6	FT-6
A1012K-SDUCR/L07	●	●	15	12	9	125	23	11	6			
A1216M-SDUCR/L07	●	●	18.5	16	11	150	36	15	6		MT2.5*7	